



**GENERAL
PLAN
UPDATE**

General Plan Educational Series Part II: Details of the General Plan Elements

Monday, April 23rd, 2007

Agenda

- ❖ Welcome & Introductions
- ❖ Introduction to the Fullerton General Plan Update
- ❖ Fullerton's General Plan Elements
- ❖ Introduction to the Environmental Review Process



INTRODUCTION TO THE FULLERTON GENERAL PLAN UPDATE



What is a General Plan?

- ❖ California requires each city and county to adopt a General Plan.
- ❖ A General Plan identifies the community's priorities and vision for the future.
- ❖ It is a “blueprint” for growth and development, usually with a 20-year horizon.



Why Update the General Plan?

- ❖ Fullerton's last comprehensive update to the General Plan took place in 1996.
- ❖ The City is now updating its General Plan to better address current issues and to reflect the values and visions of the community.



General Plan “Elements”

- ❖ General Plans have several “Elements,” or chapters, that focus on specific topics
- ❖ Each element includes goals and policies

Elements Required By Law

- ❖ California requires that seven elements be included in each General Plan:
 - Land Use
 - Housing
 - Circulation
 - Noise
 - Safety
 - Conservation
 - Open Space
- ❖ Cities can also adopt optional elements, such as:
 - Regional Coordination
 - Community Vision
 - Implementation
 - Community Services
- ❖ Regional mandates require the following issues be addressed:
 - Air Quality
 - Growth Management
 - Waste Management

General Plan Goals, Policies, and Programs

- ❖ Each element of the General Plan identifies goals, policies, and programs to guide future planning in the city.



General Plan Goals

- ❖ A general statement describing a desired future condition.

Example from the Community Health & Safety Element:

“Efficient, well-equipped and responsive fire and police departments which offer maximum feasible personal safety and protection from loss of life and property.”

General Plan Policies

- ❖ A statement of commitment designed to guide future decisions in such a way that the General Plan goals will be achieved.

Example from the Community Health & Safety Element:

“Expand the police and fire services as necessary to serve increased needs.”

General Plan Programs

- ❖ An organized set of actions, tasks, or projects which, when accomplished, satisfies the policy and upholds the commitment of the goal.

Example from the Community Health & Safety Element:

“Expansion of water and hydrant system as necessary.”

FULLERTON'S GENERAL PLAN ELEMENTS



Fullerton's General Plan Elements

Fullerton General Plan	State Requirement
Introduction	<i>Optional</i>
Vision Element	<i>Optional</i>
Land Use Element	<i>Land Use</i>
Circulation Element	<i>Circulation*</i>
Resource Management Element	<i>Conservation, Open Space</i>
Community Health & Safety Element	<i>Noise, Safety</i>
Community Services Element	<i>Optional</i>
Regional Coordination Element	<i>Optional*</i>
Implementation & Public Participation Element	<i>Optional</i>
Housing Element	<i>Housing</i>



* Includes issues that are required to be addressed by regional mandates

Introduction

- ❖ Describes the contents of the General Plan
- ❖ Discusses scope and authority
- ❖ Describes purpose and intent of the General Plan document



Vision Element

- ❖ Establishes the overall goals and visions for the City of Fullerton

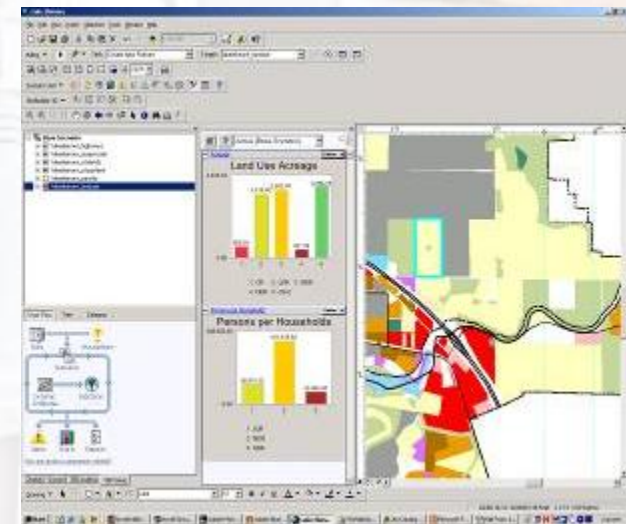
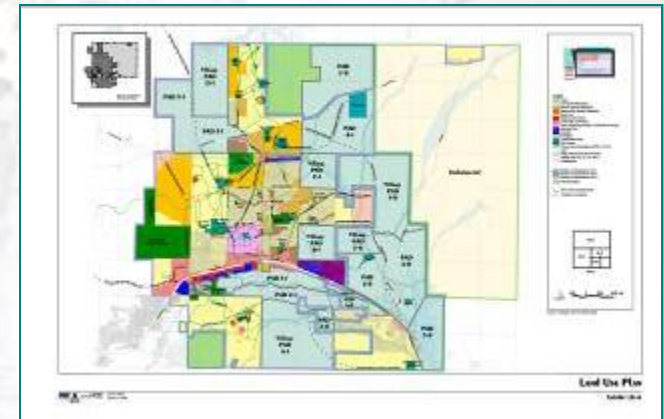


Inside the Vision Element

- ❖ The vision will help guide the development of the General Plan
- ❖ The vision will be based on community input and priorities
- ❖ The Vision Statement will state qualities, values, and characteristics which the City wishes to preserve, enhance, and create.

Land Use Element

- ❖ Describes the types of appropriate land uses and their location
- ❖ Sets standards for development intensity and density
- ❖ Provides the official land use map for the City



CommunityViz

Inside the Land Use Element

- ❖ Describes existing land use characteristics
- ❖ Discusses issues
- ❖ Includes the land use plan map and descriptions
- ❖ States goals, policies, and programs to plan for future growth

Circulation Element

❖ Contains the overall transportation plan for the City, including:

- Roads
- Highways
- Aviation
- Bike trails
- Public transit



Inside the Circulation Element

- ❖ Overview of the existing roadway system
- ❖ Describes the future roadway need
- ❖ Provides an alternative transportation plan (i.e. bus, train, plane, bike, etc.)
- ❖ Includes goals, policies, and programs to plan for future need

Resource Management Element

❖ Focuses on protection of Fullerton's natural resources, including:

- Water
- Air
- Biological Resources
- Land
- Energy
- Mineral
- Historic
- Scenic



Inside the Resource Management Element

- ❖ Includes State required Conservation and Open Space Elements
- ❖ Discusses existing resources
- ❖ Develops goals, policies, and programs for the preservation and conservation of those resources

Community Health & Safety Element

- ❖ Protect the Fullerton community from potential hazards, including:
 - Floods
 - Earthquakes
 - Hazardous and toxic materials
 - Fire and Crime
 - Noise



Inside the Community Health & Safety Element

- ❖ Includes State required Noise and Safety Elements
- ❖ Addresses existing and potential hazards
- ❖ Develops a disaster preparedness plan
- ❖ Includes goals, policies, and programs to protect the community

Community Services Element

❖ Describes future need for services, including:

- Water
- Sewer
- Drainage
- Solid waste facilities
- Public facilities and buildings



Inside the Community Services Element

- ❖ Discusses existing community services
- ❖ Evaluates the need for future community services
- ❖ States goals, policies, and programs to ensure future needs are met

Regional Coordination Element

- ❖ Addresses regional issues and coordination efforts with local, county, and regional bodies.



ORANGE
COUNTY
FIRE
AUTHORITY



CALIFORNIA STATE UNIVERSITY, FULLERTON

Cal State Fullerton

Inside the Regional Coordination Element

- ❖ Develops a Congestion Management Plan
- ❖ Discusses regional waste management and air quality
- ❖ Includes goals, policies, and programs to identify regional solutions to these regional issues

Implementation & Public Participation Element

- ❖ Describes how to implement the policies in the General Plan
- ❖ Includes public participation methods for making decisions about planning issues



Inside the Implementation & Public Participation Element

❖ Implementing Mechanisms:

- Capital Improvement Plan
- Zoning, Specific Plans, and building regulations
- Development fees
- Code enforcement
- Redevelopment
- Annual General Plan Progress Report

❖ Public Participation:

- “Focus on Fullerton”
- Cable TV
- Public workshops
- Involvement in Community Development Block Grant budget review
- Special programs (Operation Cleanup)
- Citizen surveys



Housing Element

- ❖ Assesses housing needs on a Citywide and regional scale
- ❖ Provision of housing for a variety of income types
- ❖ Requires state review



Inside the Housing Element

- ❖ Should be updated every 5 years
- ❖ Evaluates housing opportunities for all income levels (very-low, low, moderate, and above-moderate)
- ❖ Addresses both existing and projected housing needs
- ❖ New construction, rehabilitation, and conservation of units
- ❖ Identifies constraints on housing
- ❖ Goals, policies, and programs

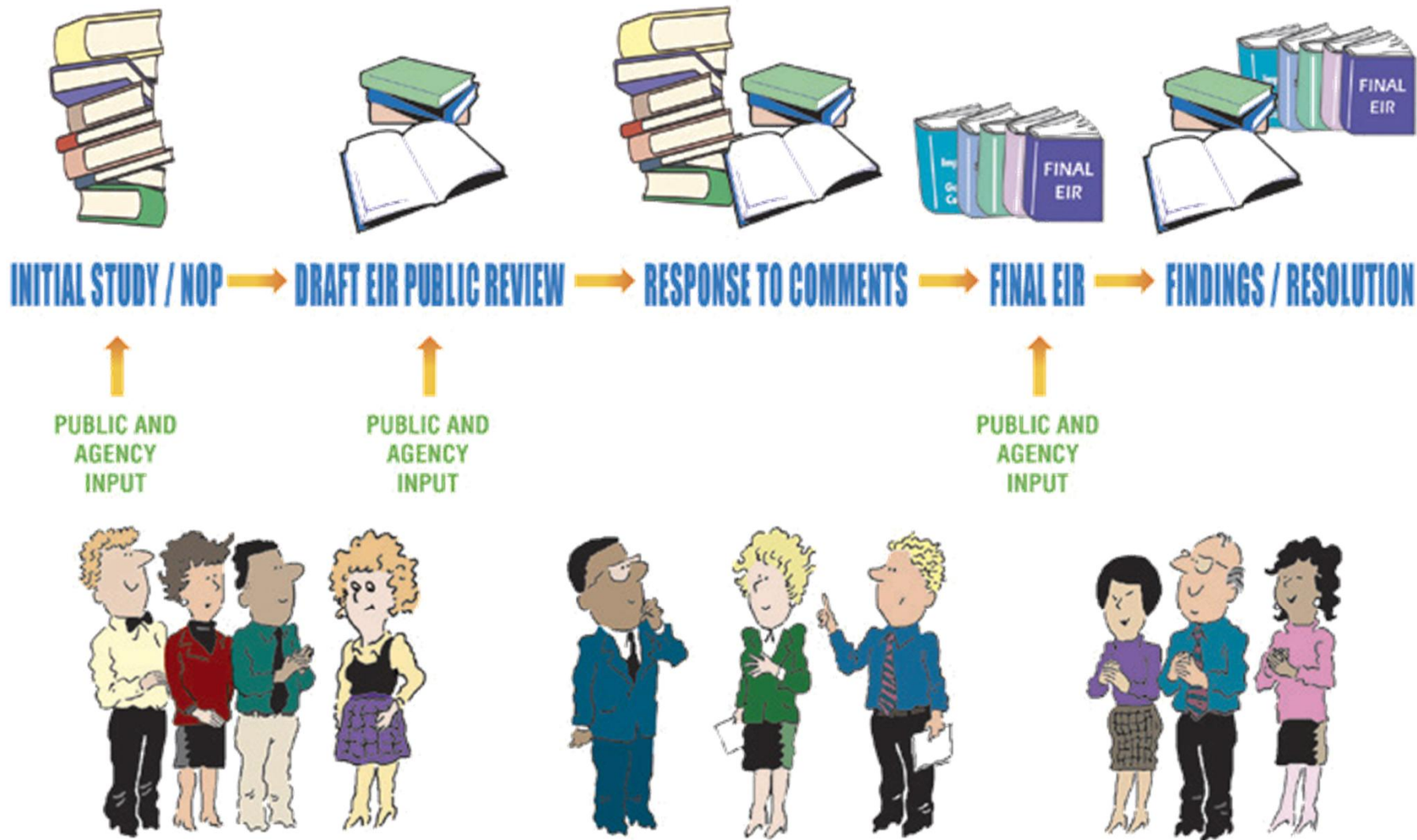
Projected needs are identified by the Southern California Association of Governments (SCAG) through the Regional Housing Needs Assessment (RHNA) process.



INTRODUCTION TO THE ENVIRONMENTAL REVIEW PROCESS



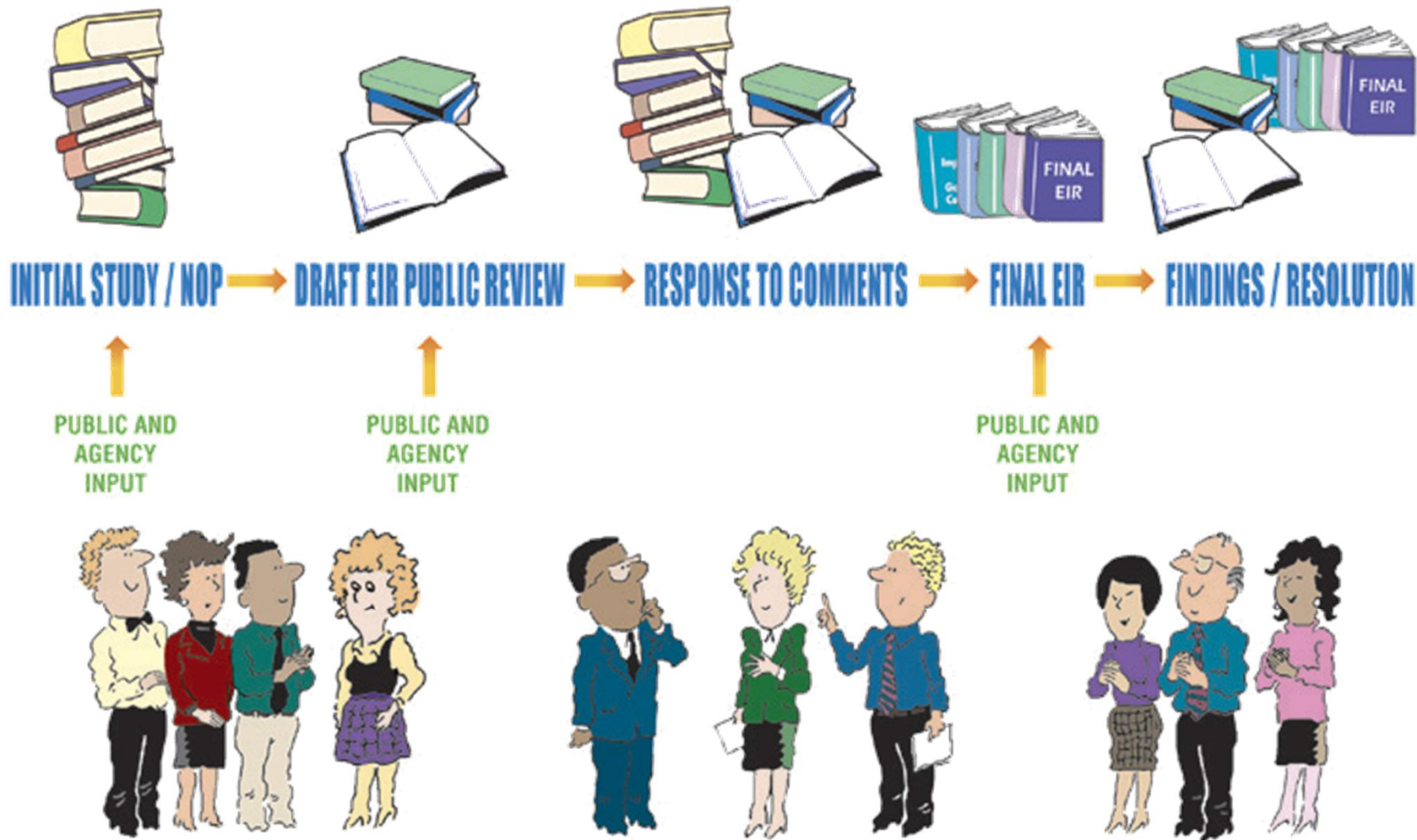
EIR Review Process



Step 1: Initial Study/NOP

- ❖ Project Description
- ❖ Initial Study
- ❖ Notice of Preparation – 30 Day Review
- ❖ Public Scoping Meeting

EIR Review Process



Step 2: Draft EIR

- ❖ Issues Analysis
- ❖ Cumulative Affects
- ❖ Growth Inducement
- ❖ Alternatives
- ❖ Hearing during the 45-Day Review Period

Step 2: Draft EIR

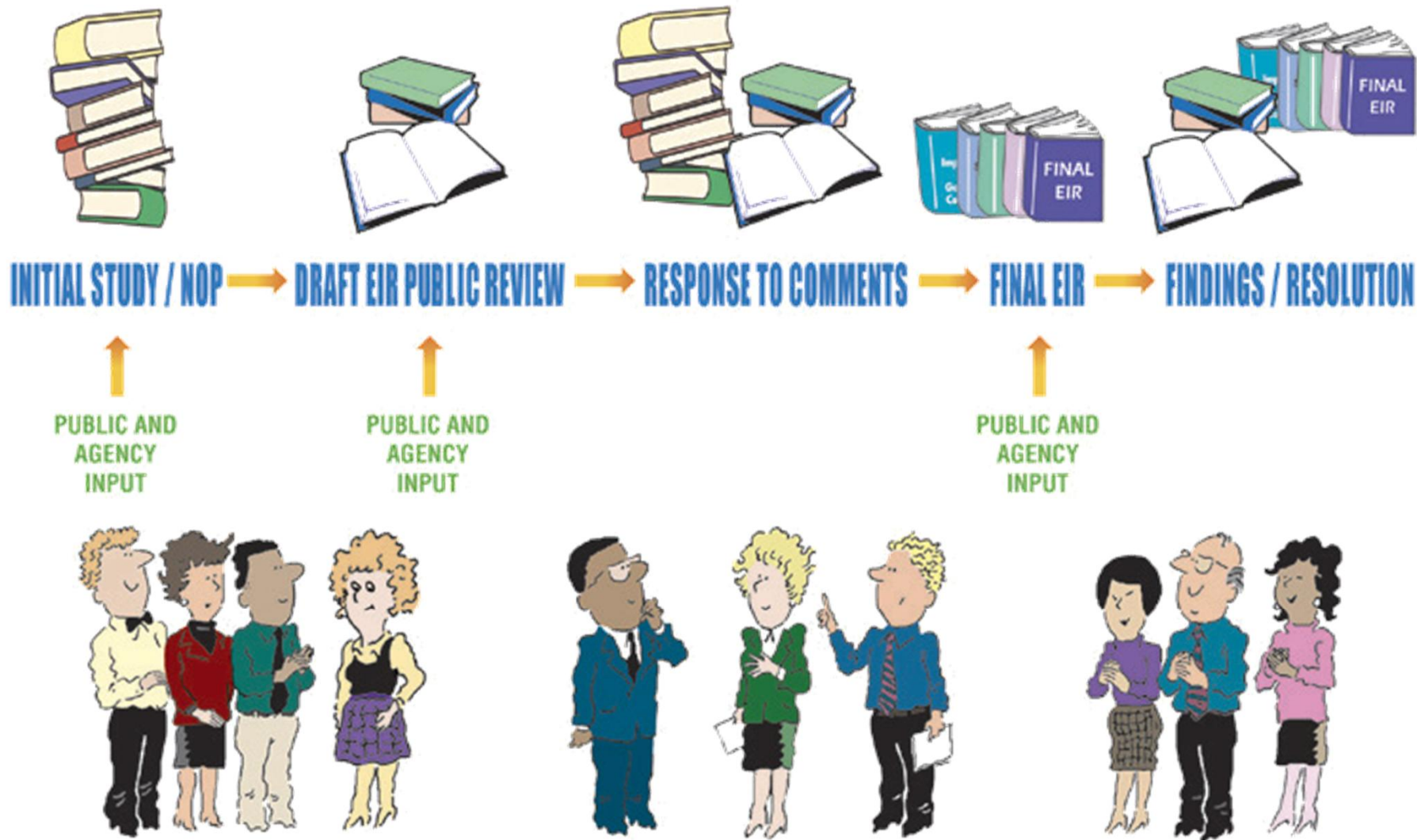
- ❖ Aesthetics
- ❖ Agricultural Resources
- ❖ Air Quality
- ❖ Biological Resources
- ❖ Cultural Resources
- ❖ Geology and Soils
- ❖ Hazards and Hazardous Materials
- ❖ Hydrology and Water Quality
- ❖ Land Use and Planning
- ❖ Mineral Resources
- ❖ Noise
- ❖ Population and Housing
- ❖ Public Services
- ❖ Recreation
- ❖ Transportation/Traffic
- ❖ Utilities and Service Systems

Step 2: Draft EIR

Issue Analysis:

- ❖ Existing Conditions
- ❖ Thresholds of Significance
- ❖ Impact Analysis
- ❖ Mitigation Measures

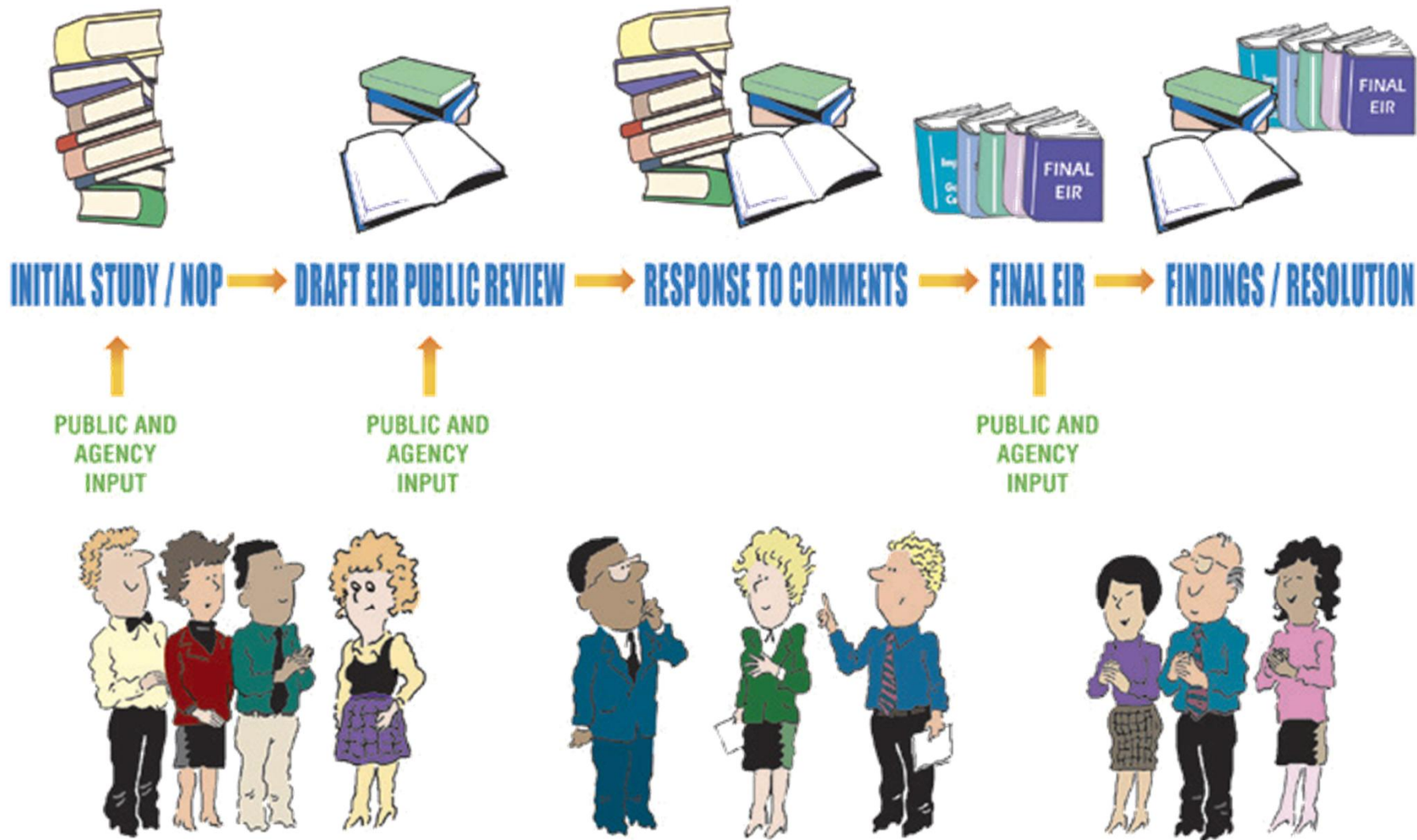
EIR Review Process



Step 3: Response to Comments

- ❖ Respond to all written comments received during the 45-day review for the Draft EIR.

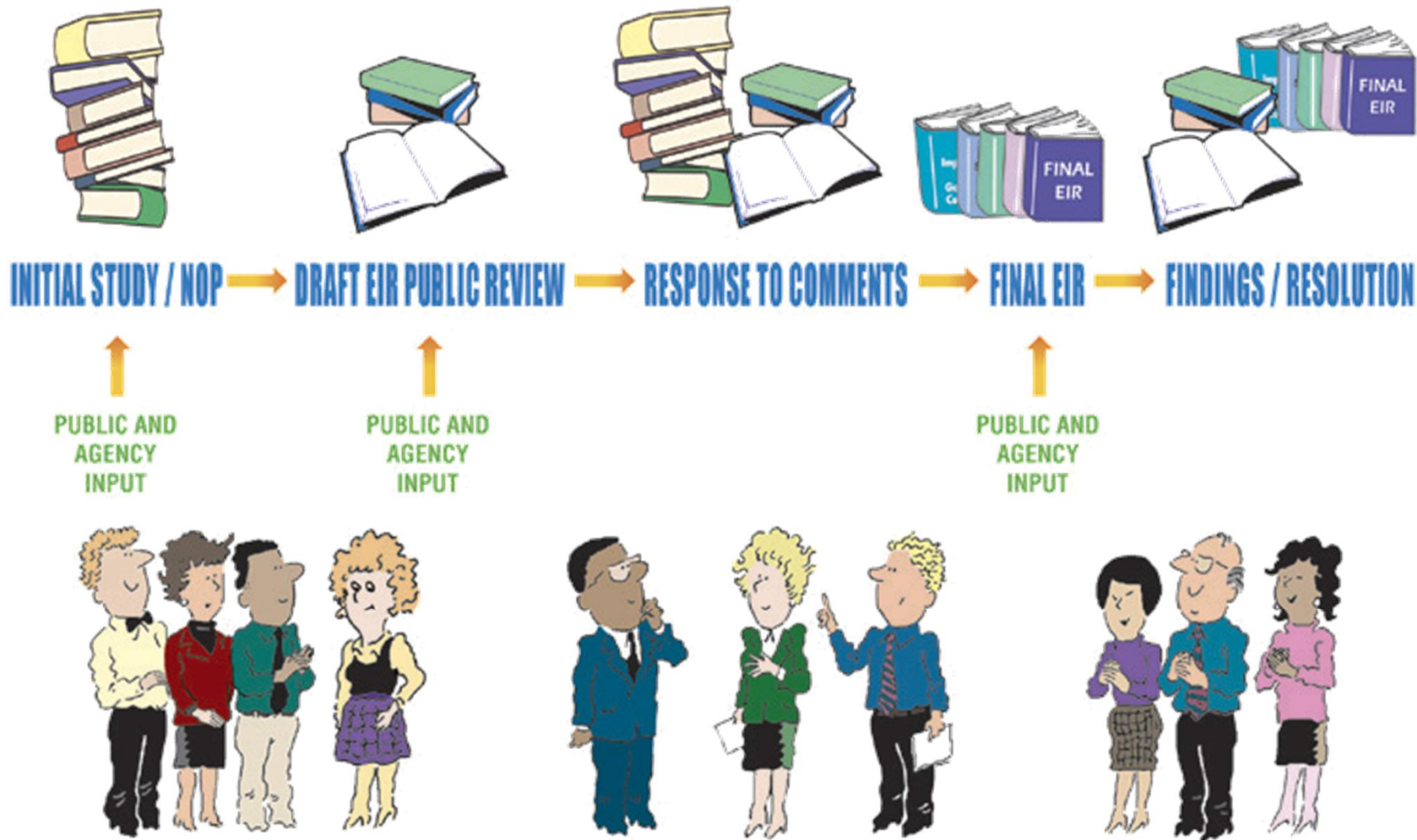
EIR Review Process



Steps 4 and 5: Final EIR

- ❖ Final EIR Preparation
- ❖ Mitigation Monitoring Programs
- ❖ Findings/Resolutions
- ❖ Public Hearings
- ❖ Certification Determination

EIR Review Process



Join us for

Community Open House:

Virtual Tour of Fullerton

May 21, 2007

5:00 – 8:00pm

Fullerton Senior Center

FOR MORE INFO:

visit **www.ci.fullerton.ca.us**

**or contact Bob St. Paul, Senior Planner at
(714) 738-6559**

